

Intelligent patch cords: RJ45 with light identification Power link for networks



Patented

TM **PatchSee** [®]
"intelligent patch cord"

The origin : development of the PatchSee products 3 UNDENIABLE FACTS !

Both the public and private sectors are increasingly depending on Information Technology and networking applications. What happens in a call center when the network crashes? How can banking operations be processed efficiently if the network is subject to disturbance or lacks in reliability ?

Time is money and every minute counts !

Repatching operations for both voice & data must be done without disturbing the company's work in a restrictive scheduled time that requires a quick and confident expertise... extra time work can also be expensive !

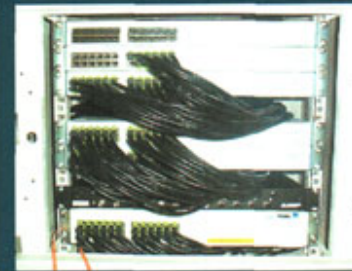
Be quick and confident !

The traffic within companies networks is getting more and more important because of the increasing size of the numerous data transmissions : internet, pictures and even office automation applications gets bigger and bigger.

The data-processing connections must ensure a broader transfer of flow to satisfy the users needs !

BE QUICK AND CONFIDENT DURING TROUBLE-SHOOTING

Our customers study shows that 5 minutes downtime cost 1500€ for 35% of our clients, whereas it costs up to 5000€ for another 10% of the companies. During critical times like this, it is essential to be efficient, work with self-confidence and reduce the cost of work by gaining on time when it comes to tracing the cables (e.g : tracing the cables that run under the floor or identifying the right port which is connected to the outlet).



IMPROVING RELIABILITY WITHOUT ANY ADDITIONAL COST

Because disconnecting the wrong patch cord is detrimental and can cause some degradation, it is a real added value to be assisted by a simple technology which is based on an infallible identification of the cables.

The light identification technology is easy to implement and our products are compatible with all structured cabling systems and active equipments.

There is no over cost besides other manufacturers cabling system solutions and it generates a return on investment. ROI* < 12 months.



PERFORMANT CONNECTIONS COMPLIANT WITH THE STANDARD SPECIFICATIONS

The RJ45 patch cord can be seen as the "weak link" of the network : bad electric performance, the usual "spaghetti" mess coming out of the racks. Patch cords can be difficult to manage and their Bit Error Rate (BER) could sometimes not meet all expectations. Today the patch cord must become the "strong link" of the Channel connections and be compliant with the standard specifications for both Cat.5e and Cat.6 (electric performance...).

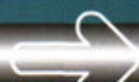
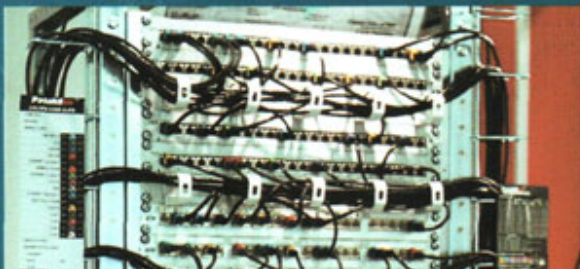
To meet all requirements, we have based our policy on controlling the quality of our Cat5e and Cat6 patch cords. Since 2000 each RJ45 patch cord has been tested and controlled as specified by the EIA/TIA standard. All test reports have been saved on a computer database with serial numbers that have been also printed on the cables.



BUT ALSO...

I.T staff can meet problems with their cabling system, get used to their day to day practice and eventually get on with it. However an easy cable management and network maintenance can improve efficiency and make life easier: Is your current system convenient ? and what do you do when...

- You need a green patch cord of 1m but you only have a red one of 5 m in stock ?
- You have only 6 different colour of cables available but you need colour coding for 10 different applications ?
- You have cables that are too long and take too much space in the racks ?
- You see messy patch panels ?



More than 2 million customers use PatchSee

Use PatchSee Cat.6: be ahead of tomorrow

CAT.6: THE CURRENT STANDARD

Telecommunications cabling, once specified uniquely for each telecommunications applications, has evolved into a generic cabling system. Telecommunications applications use ANSI/TIA/EIA-568-B1 to specify their cabling requirements. The Permanent Link is as an investment which is scheduled to last for 6 to 10 years time. In this respect customers are becoming more and more demanding as it is essential to be assured that all components meet the Cat.6 specifications and come up to all expectations. It is also essential to have the assurance of the compatibility and quality of the components within the channel (outlets, cables, patchpanels, patchcords...).

WHY CATEGORY 6 ?

To ensure generic cabling system performance, components are specified to support interoperability when products from different manufacturers are mated.

Warranty for each components of the network.

The bandwidth is superior to the one of Cat.5e with requirements specified up to 250 MHz.

Return Loss and Next performance 16 times superior to the one of Cat.5e (difference of 12dB).

Cat.6 is progressing faster than the "fiber to desk" solution as it is 4 times cheaper !

A substantial improvement of the Bit Error Rate (BER).

A slight improvement of the overall Cat.5e network performance by installing Cat.6 patchcords.

GUARANTY OF QUALITY

The permanent link installed on site must be certified to meet Cat.6 requirements.

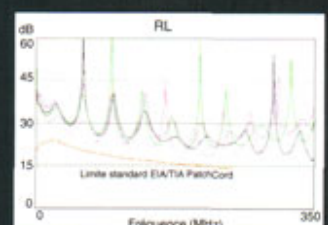
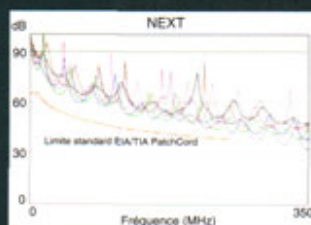
Patchsee Cat.6 patch cords are standard compliant (EIA/TIA and ISO/IEC 11801).



OUR COMMITMENTS TO GUARANTY CATEGORY 6 CONNECTIONS

To meet the standard requirement, Patchsee has developed a Cat.6 RJ45 Patch cord with the following specifications:

- PIMF cables with twisted pair and UTP Cross Web for superior Return Loss and Next performance: less interference from one pair of wires to the other as the pairs are twisted together. The PIMF cable is also provided with a LSOH sheath.
- a Cat.6 RJ45 connector with 8-position modular jacks (asymmetric shifting)
- standard compliance test procedure as well as marking: individual test and individual serial number for each patch cord.





7 REASONS TO CHOOSE PatchSee

Why ?

How ?

RELIABILITY	No handling error, no accidental disconnection.	Infallible light identification of both extremities of the patch cord.
TIME SAVING	Immediate and positive identification without wasting time in tracking the cable by hand. Increase the availability rate of networks.	Fast and Simple identification procedure.
PERFORMANCE	0% transmission failure rate. Compatibility with all other manufacturers cabling systems and active equipment	Patchsee warranty with systematic test for standard compliance (EIA/TIA & ISO/IEC).
PRICE	Same price as other good quality RJ45 patchcords.	Simple technology, easy to implement 2 POF (Plastic Optical Fibers) running the length.
COST EFFECTIVENESS	ROI optimised in less than a year Substantial reduction of the number of colour cables held in stock. Optimised space in the comms rooms as well as in the racks	Reduction of downtime duration when trouble-shooting. Removable colour clip simple management 16 colours available. Direct cabling from servers to switches with long length cables (from 6.1m up to 50m) in addition to 11 standard lengths available.
EASY MANAGEMENT	Colour coding for different application devices (internet, printers, telephones, etc...) The patch panels are neat and tidy.	Removable clips available in 16 different colours to use the right colour and the right length instead of coloured cables. Easy cable management that lasts in time to avoid cables "spaghetti mess"... No hassle, no more hand tracking !
AVAILABILITY	Quick order processing	Permanent availability of clips and of 200 000 patch cords of all standard length.

PatchSee PRODUCTS RANGE

PCI-6Patch

RJ45 Patch cord - UTP and FTP - ready for Cat6a 10 Gbit/s standard ratification - For high density panels.

Class6Patch

RJ45 patch cord - Cat.6 - UTP and FTP - 11 lengths (from 0.6m to 4.90m).

DirectPatch

RJ45 patch cord - UTP and FTP - long length for direct cabling (from 6.1m to 50m).

BasicPatch

RJ45 patch cord - Cat.5e - UTP and FTP - 6 lengths (from 0.6m to 4.90m).

PhonePatch

RJ45 patch cord - 2 pair - For PABX application only.

PatchClip

Removable colour clips - Available in 16 colours.

PatchLight

Light injection tool - 6 colours of light available.

PRO-PatchLight

PRO model - supplied with charger kit - longer battery life with new added functionalities (powerful flashing mode ...).

PatchGrip

Tie cables up without stressing the sheath - easy use by unrolling the precut strips (reusable).



Reseller's company stamp:

PatchSee[®]

"intelligent patch cord"

